



Leaders in wet area partitioning & locker systems



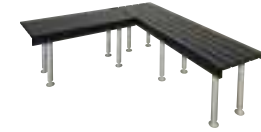
toilet & shower partitions



lockers



vanities



slat seating



tables

WASHROOM EQUIPMENT



INTRODUCTION



Top of the line shower and toilet partitioning should be complimented with superior washroom equipment.

For this reason Waterloo have selected a range of washroom accessories that are not only aesthetically pleasing, but functional and long lasting quality.

The products in our washroom equipment range are manufactured from the highest-grade materials and where applicable, meet or exceed any relevant Building Code or Standard. They are also consistently specified by major architectural firms in commercial designs.

By choosing Waterloo Washroom equipment when ordering partitioning, you are not only gaining efficiencies in contractual management, but also saving time on installation as equipment can be installed at the same time as partitioning.

Our team can help you select the right product for your needs – you only have to call.

Whilst Waterloo can/do provide a supply and fix service for all the product depicted herein, it is the responsibility of the architect/developer/builder in ensuring compliance to specific product fitment dimensioning, local regulatory and/or BCA statutory or other Australian Standards that may apply to the location and fit-off of a specific product e.g. wall cavity dimensions to suit recessed product; noggin fit-out for grab rails etc, height and location of accessories in a facility for the disabled.

Waterloo will take all care in the installation of such items however, will accept no responsibility for installation if after the event it is found to be non-complying due to errors made by a secondary or third party in the construction plans and/or set out.

WASHROOM EQUIPMENT

Combination Units

All in one hand dryer, paper towel dispenser & waste receptacles



4

Paper Towel Dispensers

Dispensing folded and paper towel rolls



6

Toilet Roll Holders

Single, double & jumbo toilet roll holders



7

Hand Dryers

A range of drying times and adjustable sensors



10

Soap Dishes & Dispensers

Modern designs that are easy to clean



12

Baby Change Units

Safe, sturdy & hygienic change units



14

Shower Seats

Comfortable, quick drying & long lasting



15

Grab Rails & Shower Kits

Multiple shapes to suit all situations



16

Door Hardware

For a grand entrance



18

Mirrors

Stylish, sturdy and durable



19

Braille Signage

Signage which also helps the visually impaired



20

Utilities

A hook for every item



21

COMBINATION UNITS

Stainless steel paper towel dispenser, hand dryer and waste receptacle units.

WL73NI-SM

- ✓ Hand dryer
- ✓ Paper towel dispenser
- ✓ Waste receptacle

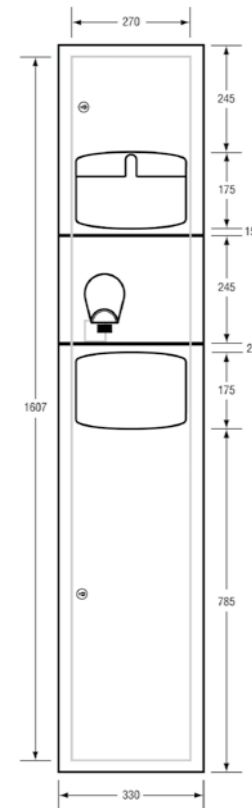
Models
WL73NI-SM Surface Mounted

Overall size
W330mm x H1660mm x D190mm

Waste Receptacle
26L removable s/s

Hand Dryer
Heavy-duty automatic model
HK2400. (2.4KW)

Capacity
Towel Dispenser:
300 interfold or
500 interleaved
standard rolls.



WL73NI-D-SM

- ✓ Hand dryer
- ✓ Paper towel dispenser
- ✓ Waste receptacle

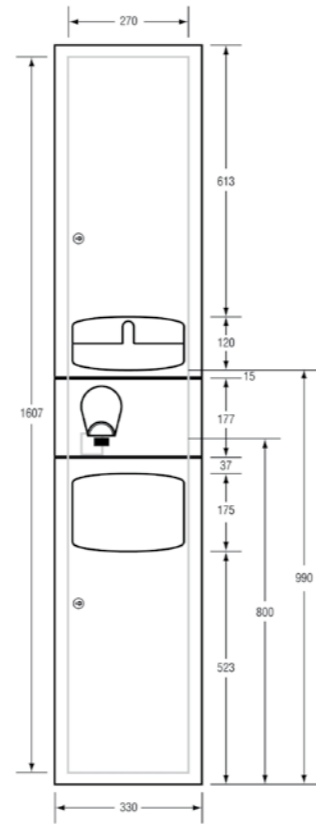
Models
WL73NI-D-SM Surface Mounted Model

Overall Size
W330mm x H1660mm x D190mm.

Waste Receptacle
10L removable s/s

Hand Dryer
Heavy-duty automatic model
HK2400. (2.4KW)

Capacity
Towel Dispenser:
300 interfold or 500 interleaved
standard rolls.
Internal Storage - shelf in upper
section for extra paper storage



COMBINATION UNITS

Stainless steel paper towel dispenser and waste receptacle units.

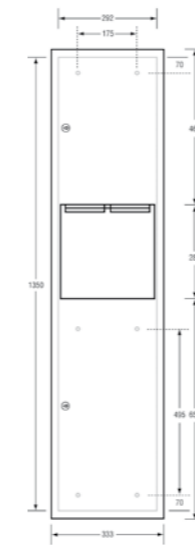
WL706-SM

- ✓ Paper towel dispenser
- ✓ Waste receptacle

Models
WL706-SM Surface Mounted
WL707-SM Surface Mounted

Overall size
W333mm X H1397mm X D120mm
(Model 707 is 157mm D for larger
waste receptacle)

Capacity
Dispenses 600 C-fold or
800 multi-fold paper towels
Removable 19L stainless steel
waste container (706)



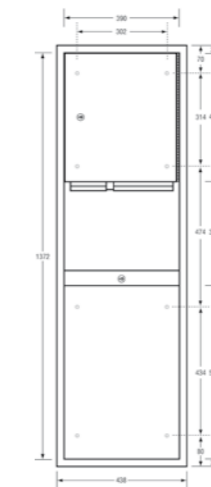
WL705-SM

- ✓ Paper towel dispenser
- ✓ Waste receptacle

Models
WL705 - SM surface mounted

Overall size
W438mm x H1420mm x D240mm

Capacity
Dispenses 600-fold or
800 multifold paper towels.
Removable 49L stainless steel
waste receptacle is locked into
cabinet.



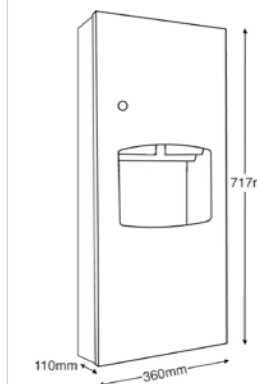
WL710-SM

- ✓ Paper towel dispenser
- ✓ Waste receptacle

Models
WL710 - SM surface mounted

Overall size
W360mm x H717mm x D110mm

Capacity
Dispenses multi-fold or
interleaved towels.
9L removable waste
receptacle



PAPER TOWEL DISPENSERS

Single roll & multiple sheet paper towel dispensers

WL727

Ultra -slim paper towel dispenser

With refill indicator lock & hinge down lockable front panel.
Available in stainless steel satin finish or powder coated white.

Capacity

2 packs of 150ea 300 interleaved ultra slim paper towels

Dimensions

W - 265mm
H - 365mm
D - 70mm



WL4093

Standard commercial size roll towel dispenser

Available in #304 stainless steel
Satin finish or powder coated white.

Capacity

90m long x 190mm wide roll

Overall Size

W - 222mm
H - 242mm
D - 180mm



WL725

C-Fold or Multifold paper towel dispenser

304 stainless steel with tumbler lock.
Available in stainless steel satin finish or powder coated white.

Capacity

450 C-fold or 600 multifold paper towels

Dimensions

W - 282mm
H - 370mm
D - 104mm



WL726

C-Fold or multifold paper towel dispenser

#304 stainless steel with tumbler lock.
Available in stainless steel satin finish or powder coated white.

Capacity

250 C-fold or 300 multifold paper towels

Dimensions

W - 282mm
H - 204mm
D - 104mm



TOILET ROLL HOLDERS

Security toilet roll holders

WL800

Two toilet roll holder

#304 Stainless steel cabinet & mechanism. Top roll drops in place when bottom roll finished.

Capacity

Two standard rolls

Overall Size

W - 153mm
H - 305mm
D - 172mm



WL832

Two toilet roll holder

Available in white or S/S. Top roll is moved into position via vertical slots on each side.

Capacity

Two standard rolls

Overall Size

W - 118mm
H - 310mm
D - 126mm



WL833

Triple in-line toilet roll holder

Available in white or S/S. When first roll is used, next roll is moved into position, via vertical slots on each side.

Capacity

Three standard rolls

Overall Size

W - 118mm
H - 433mm
D - 126mm



WL4094

Interfold toilet tissue dispenser

In white & stainless steel

Capacity

Two standard interfold packets

Overall Size

W - 142mm
H - 242mm
D - 43mm



WL841

Jumbo toilet roll dispenser S/S

Capacity

250m long up to 135mm 2-ply tissue

Overall Size

W - 273mm
H - 273mm
D - 120mm



WL841DBL

Double jumbo toilet roll dispenser S/S

Capacity

2 x 250m long up to 135mm 2-ply tissue

Overall Size

W - 520mm
H - 284mm
D - 150mm



WL842

Jumbo roll toilet paper dispenser S/S.

Capacity

Single jumbo roll

Overall Size

W - 271mm
H - 280mm
D - 117mm



TOILET ROLL HOLDERS

Single & multiple toilet roll holders

WL6225PSS

Single toilet roll dispenser S/S

Size

W - 145mm
H - 90mm
D - 85mm



WL6224PSS

Single toilet roll dispenser S/S with cover

Size

W - 145mm
H - 90mm
D - 85mm
Cover - 110x115mm



WL113

Single toilet roll dispenser S/S

Size

W - 132mm
H - 25mm
D - 73mm



WL6048PSS

Single toilet roll dispenser S/S square

Size

W - 145mm
H - 95mm
D - 85mm



WL820

Single toilet roll dispenser enamel

Enamel baked aluminium, single mould
ABS holder with S/S pins & spring.
Restricted feed.

Size

W - 162mm
H - 60mm
D - 103mm



WL837

Single toilet roll dispenser chrome

Size

W - 154mm
H - 70mm
D - 108mm



WL6000PSS

Single roll toilet roll dispenser S/S round

Size

W - 145mm
H - 95mm
D - 85mm



WL825

Double toilet roll dispenser enamel

Enamel baked aluminium, single mould
ABS holder with S/S pins & spring.
Restricted feed.

Size

W - 330mm
H - 60mm
D - 103mm



WL838

Double toilet roll dispenser chrome

Size

W - 282mm
H - 70mm
D - 108mm



WL3355B

Single toilet roll dispenser chrome

Size

W - 165mm
H - 140mm
D - 58mm



WL6226

Chrome single toilet roll dispenser

Bright chrome coated brass.

Size

W - 170mm
H - 60mm
D - 76mm



WL949-375

Double toilet roll dispenser & shelf

#304 Stainless Steel, 1.5mm thick shelf,
ABS Holders & anti-theft spindles
Seamless welds and rolled edges

Size

W - 375mm
H - 119mm
D - 130mm



WL261-SM

Single toilet roll dispenser

0.8mm type 304 S/S with
chrome plated Zamak brackets
and plastic rollers.

Size

W - 161mm
H - 161mm
D - 91mm



WL255

Single toilet roll dispenser S/S

Size

W - 204mm
H - 52mm
D - 100mm



WL4135

Single toilet roll dispenser

304# satin S/S Ø12mm, solid bar
& security concealed mount fixing.
Universal installation (L/R)

Size

W - 155mm
H - 110mm
D - 30mm



WL263-SM

Double toilet roll dispenser

0.8mm type 304 S/S with
chrome plated Zamak brackets
and plastic rollers.

Size

W - 322mm
H - 161mm
D - 91mm



WL256

Double toilet roll dispenser S/S

Size

W - 356mm
H - 52mm
D - 100mm



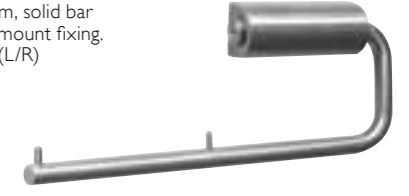
WL4135-2

Double toilet roll dispenser

304# satin S/S Ø12mm, solid bar
& security concealed mount fixing.
Universal installation (L/R)

Size

W - 269mm
H - 110mm
D - 30mm



HAND DRYERS

Quick, clean & efficient electric hand dryers

EcoFast

Automatic operation EcoFast hand dryer

Material

Model 01: White powder coated
Model 05: Stainless steel

Motor

500W, 29000 R.P.M brush type, dual ball bearings.
75±1 db. 105°C auto resetting safety thermal cut off

Power Use

240V(ac), 50Hz, 1.0kW

Drying

90m/s warm air speed at 55°C to dry in less than 15 seconds. 60 seconds auto shut off with 51-254mm adjustable distance sensor.

Heater Element

500W. 85°C auto resetting safety thermal cut off

Security

2 vandal proof SS screws & key wrench

Dimensions

W - 250mm
H - 180mm
D - 139mm



WK-JA05

Automatic operation hand dryer

Material

Stainless steel

Motor

700W, brush type, dual ball bearings low voltage motor. 78±3 db. 105°C auto resetting safety thermal cut off with over current fuse (replaceable).

Power Use

240V(ac), 50Hz, 1.6kW

Drying

100m/s warm air speed adjustable at 55°C temp to dry in less than 15 seconds. 60 seconds auto shut off with 51-330mm adjustable distance sensor.

Heater Element

450-900W (adjustable), 65°C Auto resetting thermal cut off

Security

2 vandal proof SS screws & key wrench

Dimensions

W - 205mm
H - 287mm
D - 180mm



WL-2200SA(F)

Automatic operation hand dryer

Material

Stainless Steel #304 with chrome plated zinc nozzle

Motor

100W, brushless 2850 R.P.M (50Hz) 63±3 db. 105°C auto resetting safety thermal cut off

Drying

Dryer delivers 160 CFM to dry in 25-30 seconds. Auto power cut off in case of irregular use over 120 seconds with 10 -30 cm adjustable distance sensor.

Heater Element

Designed with 87°C thermostat. Designed with 141° C thermal cut off.

Security

2 Vandal-proof lock screws in Stainless Steel & Key wrench.

Dimensions

W - 320mm
H - 220mm
D - 175mm



WL-2200SS(F)

Button activated hand dryer

Material

Stainless Steel #304 with chrome plated zinc nozzle

Motor

100W, brushless 2850 R.P.M (50Hz). 63±3 db. 105°C auto resetting safety thermal cut off

Drying

Dryer delivers 160 CFM to dry in 25-30 seconds. Adjustable timer control range from 20-55 seconds.

Heater Element

87°C thermostat with 141° C thermal cut off.

Security

2 Vandal-proof lock screws in Stainless Steel & Key wrench.

Dimensions

W - 320mm
H - 220mm
D - 175mm



If hard-wiring is required then installation must be undertaken by a licensed electrician

WK2200EA

Automatic operation hand dryer

Material

Powder coated cast aluminium

Power Use

240V(ac), 50Hz, 2.2kW

Motor

100W, brushless 2850 R.P.M (50Hz). 63±3 db. 105°C auto resetting safety thermal cut off

Heater element

87°C thermostat with 141° C thermal cut off.

Drying

Dry in 30-35 seconds with auto cut off in case of irregular use over 120 seconds

Security

2 vandal proof SS lock screws & key wrench provided for installation

Dimensions

W - 320mm
H - 220mm
D - 175mm



WKI800PA & WKI800PS

WKI800PA - Automatic WKI800PS - Button activated

Material

High grade fire retardant ABS 3.0mm thick

Power Use

240V(ac), 50Hz, 1.6kW

Motor

80W, brushless 2850 R.P.M (50Hz), 55± db with 105°C thermostat.

Drying

100m/s warm air speed adjustable distance sensor. Power cuts off automatically in case of irregular use over 120 seconds

Heater Element

87°C thermostat & 141°C thermal cut-off.

Security

2 vandal proof SS lock screws & key wrench

Dimensions

W - 268mm
H - 220mm
D - 170mm



WK-2400PA

2400w automatic operation hand dryer

Material

Porcelain enamel coated steel with 360°C chrome cast aluminium nozzle.

Power Use

240V(ac), 50Hz, 2.2kW

Motor

2400W, 5500 R.P.M (50Hz) 70±3 db. 105°C auto resetting safety thermal cut off

Drying

60°C to dry in approx 20 seconds. Auto shut off at irregular use of over 120 seconds and 10-30cm adjustable distance sensor with hand positional LED

Heater Element

2.2kW with 65°C thermostat and 141°C thermal cut-off.

Security

2 vandal proof SS lock screws & key wrench provided for installation

Dimensions

W - 284mm
H - 247mm
D - 213mm



WK-QA

Automatic operation hand dryer

Material

Stainless steel, 1.5mm thick, satin finish

Power Use

240V(ac), 50Hz, 2.2kW

Motor

1/4 HP, 4.2k RPM, brush type, dual ball bearings. 105°C auto resetting safety thermal cut off

Drying

60°C to dry in less than 15 seconds. 2 min auto shut off with 2 second delayed turn off after last sensor read. Standard 18cm sensor.

Heater Element

2000W @ 240V(ac) with 87°C thermostat and 141°C thermal cut-off.

Security

4x S/S theft resistant hex drive screws

Dimensions

W - 314mm
H - 217mm
D - 179mm









Note: Also available in full stainless steel housing



If hard-wiring is required then installation must be undertaken by a licensed electrician









SOAP DISHES

Modern, easy to clean design

<p>WL240-B</p> <p>Corner basket soap holder Chrome Plated Brass.</p> <p>Size 176mm W x 34mm H x 115mm D</p> 	<p>WL239-B</p> <p>Corner basket soap holder Chrome Plated Brass.</p> <p>Size 113mm W x 31mm H x 90mm D</p> 	<p>WL230</p> <p>Soap dish with drain Stainless Steel.</p> <p>Size 110mm W x 50mm H x 108mm D</p> 	<p>WL243</p> <p>Corner soap & shampoo holder Stainless Steel.</p> <p>Size 120mm C to C (72mm in from rear)</p> 
<p>WL241</p> <p>Surface mounted soap dish with exposed mounting</p> <p>Stainless steel, formed from a single piece of steel with 3 drain holes.</p> <p>Size 128mm W x 50mm H x 78mm D</p> <p>Option Satin Finish (S) or Bright Finish (B)</p> 	<p>WL6022PSS</p> <p>Soap dish round mount Mounting (centre to centre, 160mm C to C)</p> <p>Size 180mm W x 19.5mm H x 95mm D</p> 	<p>WL6074PSS</p> <p>Soap dish square mount Mounting (centre to centre, 160mm C to C).</p> <p>Size 180mm W x 19.5mm H x 95mm D</p> 	<p>ML6220</p> <p>Soap dish with slots Mounting (centre to centre, 160mm C to C).</p> <p>Size 180mm W x 19.5mm H x 107mm D</p> 

SOAP DISPENSERS

Measured doses and clean design

<p>WL605-AS</p> <p>Vertical liquid soap dispenser</p> <p>Capacity 1.2L</p> <p>Material Stainless Steel</p> <p>Finish Options Satin finish Powder coating: White=W</p> <p>Size W - 123mm H - 209mm D - 71mm + 52mm pump</p> 	<p>WL600-AS</p> <p>Horizontal liquid soap dispenser</p> <p>Capacity 1.2L</p> <p>Material Stainless Steel</p> <p>Finish Options Satin finish Powder coating: White=W</p> <p>Size W - 209mm H - 157mm D - 71mm + 52mm pump</p> 	<p>WL606</p> <p>Tapered liquid soap dispenser</p> <p>Capacity 400mL</p> <p>Material Bright stainless steel body, BCP cast pump housing & ABS reservoir</p> <p>Size W - 80mm top tapered to 50mm base H - 163mm D - 152mm overall</p> 	<p>ML663-W</p> <p>Liquid soap dispenser round face</p> <p>Capacity 600mL</p> <p>Material ABS Plastic</p> <p>Size W - 103mm H - 211mm D - 105mm</p> 
<p>WL655</p> <p>Liquid soap dispenser square face</p> <p>Capacity 600mL</p> <p>Material ABS Plastic</p> <p>Size W - 106mm H - 155mm D - 80mm</p> 	<p>WL603-AS</p> <p>Liquid soap dispenser square</p> <p>Capacity 1.2L</p> <p>Material Stainless Steel</p> <p>Size W - 179mm H - 157mm D - 71mm + 52mm pump</p> 	<p>WL950-SS</p> <p>Auto liquid soap dispenser</p> <p>Capacity 900mL</p> <p>Material Stainless Steel</p> <p>Operation Battery driven sensor delivering one drop of soap</p> <p>Size W - 123mm H - 270mm D - 115mm</p> 	<p>WL950-DA</p> <p>Auto liquid soap dispenser</p> <p>Capacity 900mL</p> <p>Material ABS Plastic</p> <p>Operation Battery driven sensor delivering one drop of soap</p> <p>Size W - 112mm H - 265mm D - 104mm</p> 

Certain models also available with Button Pump - POA

BABY CHANGE STATIONS

Safe, sturdy, hygienic change units

WL9100-EH

Horizontal design baby changing station

Material

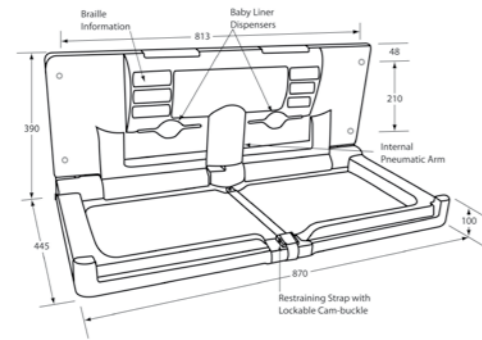
Hi-density bacteria resistant Polyethylene body
Stainless Steel hinge & mounting bracket

Features

Concave change area
Safety restraining strap fitted with lockable cam-buckle for one handed adjustment & securing
Dual bed liner dispensers
Baby/shoulder bag retainers
Pneumatic non visible Open/Close arm
Braille information
Suitable for up to 22.7kg use

Size

Open: 870mmW x 390mmH x 445mmD
Closed: 870mmW x 445mmH x 100mmD



WL9100-EV

Vertical design baby changing station

Material

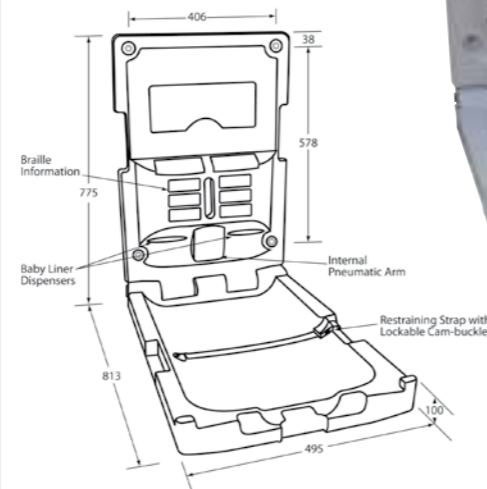
Hi-density bacteria resistant Polyethylene body
Stainless Steel hinge & mounting bracket

Features

Concave change area
Safety restraining strap fitted with lockable cam-buckle for one handed adjustment & securing
Dual bed liner dispensers
Baby/shoulder bag retainers
Pneumatic non visible Open/Close arm
Braille information
Suitable for up to 22.7kg use

Size

Open: 495mmW x 775mmH x 813mmD
Closed: 495mmW x 813mmH x 100mmD



WL991, WL992 & WL993

Fold away disabled shower seat

Laminex Compact Laminate seat with stainless steel bracket section.

Size

WL991 – 960mm W x 400mm D
WL992 – 355mm W x 315mm D
WL993 – 600mm W x 400mm D



WL994

Disabled folding shower seat

White powder coated aluminium slats with stainless steel tubular frame and lockable support leg.

Size

960mm W x 400mm D



SHOWER SEATS

Comfortable, quick drying and long lasting

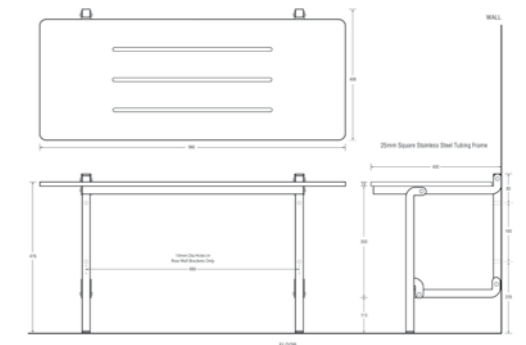
WL995

Disabled folding shower seat with legs

Laminex Compact Laminate seat with bevelled arises and self drainage slots mounted on stainless steel frame and nylon feet.

Size

960mm W x 400mm D (stand-off folded in position off floor is 725mm H x 85mm D)



GRAB RAILS & SHOWER KITS

Access for everyone

WL101 & WL102

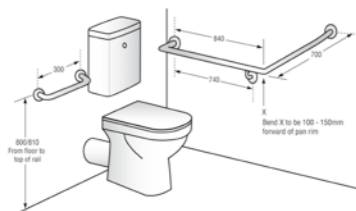
Flush mount on wall cistern & 300ml rail

Details

WL101 – Left handrail
WL102 – Right handrail

Size

Sloping arm at 30 degrees from horizontal.
Bend X 100-150 forward of pan rim



WL103 & WL104

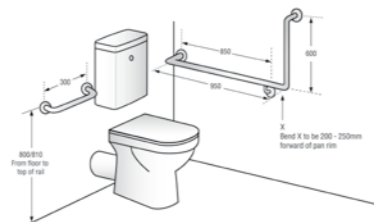
Flush mount on wall cistern & 300ml rail

Details

WL103 – Left handrail
WL104 – Right handrail

Size

Bend X 200 – 250 forward of pan rim



WL105 & WL106

Flush mount on wall cistern & 300ml rail

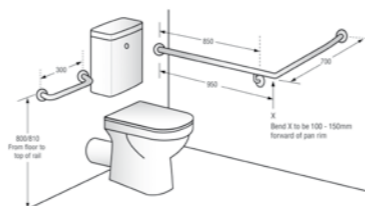
Suits right hand or left hand.

Details

WL105 – Left handrail
WL106 – Right handrail

Size

As per WL101 but rail goes all the way to the cistern wall



WL113 & WL114

30° flush mount wrap around grab rail

Suits right hand or left hand.

Details

WL113 – Left handrail
WL114 – Right handrail

Size

2525mm/rail stand off 60mm.



WL115 & WL116

90° flush mount wrap around grab rail

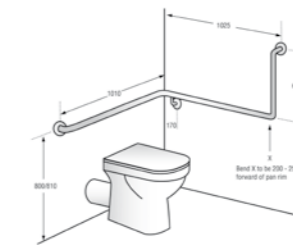
Suits right hand or left hand.

Details

WL115 – Left handrail
WL116 – Right handrail

Size

2425mm/rail stand off 60mm.



WLR107 & WLR108

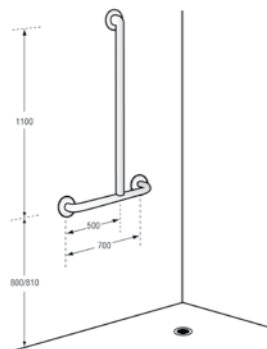
Shower grab rail for the disabled

Details

WLR107 – Left handrail
WLR108 – Right handrail

Size

700mm x 1100mm offset "T"



WL109 & WL110

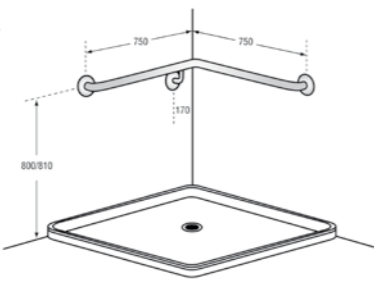
Shower grab rail for the disabled

Details

WL109 – Left handrail
WL110 – Right handrail

Size

750mm x 750mm at 90°



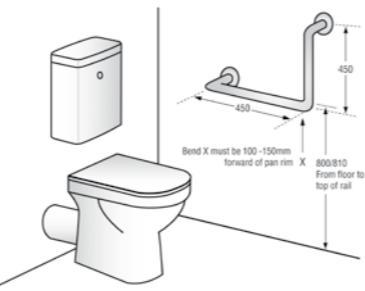
WL112

Ambulant grab rail

Suits right hand or left hand.

Size

450mm x 450mm



WLR50TPH

Pull down grab rail with toilet paper holder for the disabled

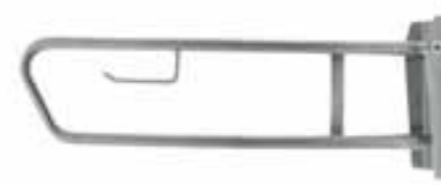
Available without toilet roll holder.

Size

315mm H x 850mm W

Mount Plate

315mm H x 101mm W



Straight concealed grab rails – 32mm

WL327 – 300mm length
WL328 – 350mm length
WL329 – 400mm length
WL330 – 450 mm length
WL331 – 600 mm length
WL332 – 750mm length
WL333 – 900 mm length



WL22-6504 & WL22-6511

Shower kits for grab rails for the disabled

Kit Consist of:

WL22-6504

Chrome/Black hand shower, black 2000mm high pressure hose, chrome elbow and 32mm grey/chrome grab rail slider (pictured)

WL22-6511

White hand shower, white 2000mm high pressure hose, white elbow and 32mm white grab rail slider.

WL22-6566

Chrome/Black hand shower, Chrome 2000mm high pressure hose, chrome elbow and 32mm grey/chrome grab rail slider.

All Components available as separate items



Note: ASI428 compliant back rests also available - please enquire. Fully compliant with Building Code Australia ASI428

Note: ASI428 compliant back rests also available - please enquire. Fully compliant with Building Code Australia ASI428

DOOR HARDWARE

For a grand entrance

<p>WL310</p> <p>Stainless steel solid pull handle Satin finish stainless steel</p> <p>Details WL310 - 12 W x 152 H WL311 - 12 W x 202 H</p> 	<p>WL4059</p> <p>Stainless steel pull plate Satin finish stainless steel</p> <p>Details Plate - 75 W x 300 H Handle - 16 W x 150 H</p> 	<p>WL4058</p> <p>Stainless steel push plate Satin finish stainless steel</p> <p>Details Plate - 75 W x 300 H</p> 	<p>WL312BB & WL313BB</p> <p>Back-to-back solid pull handles Satin finish stainless steel</p> <p>Details WL312BB - 16 W x 152 H WL313BB - 16 W x 202 H</p> 
<p>WL0670</p> <p>Skirting mounted door stop Clear anodised on aluminium finish</p>  <p>34mm 75mm</p>	<p>WL0671</p> <p>Floor mounted door stop SCP/BCP finish</p>  <p>64mm 54mm 46mm</p>	<p>WL0672</p> <p>Round floor mounted door stop SCP/BCP finish</p>  <p>37mm 50mm 40mm</p>	<p>WL0674</p> <p>Half moon floor mounted door stop SCP/BCP finish</p>  <p>45mm 45mm 25mm</p>

MIRRORS

Robust stainless steel mirrors

<p>WL770 & WL771</p> <p>Stainless steel mirror</p> <p>Details WL770 – with shelf WL771 – without shelf</p> <p>Material # 304 stainless steel with a #4 satin finish. 0.9mm for frame. Back plate and wall brackets fabricated of 1.0mm galvanised steel.</p> <p>Mirror 6mm thick plate glass safety mirror.</p> <p>Shelf # 304 stainless steel 1.2mm with shelf edges returned and hemmed for safety. Shelf welded to face frame with 127mm projection from mirror.</p> <p>Mounting Unit screwed with wall brackets by theft resistant screws.</p> <p>Dimensions 450mm W x 1000mm H 460mm W x 610mm H 460mm W x 760mm H 460mm W x 910mm H 610mm W x 760mm H 610mm W x 910mm H</p> 	<p>WL772</p> <p>Stainless steel tilt mirror</p> <p>Details WL772SH – with shelf WL772 – without shelf</p> <p>Material # 304 stainless steel with satin finish</p> <p>Mirror 6mm thick plate glass.</p> <p>Shelf Full width 125mm deep shelf (model WL772SH)</p> <p>Mounting Theft resistant mounting bracket.</p> <p>Dimensions 450mm W x 1000mm H Frame tapers from 105mm deep at top to 30mm base</p> 	<p>WL773, WL774 & WL775</p> <p>Stainless steel polished mirror</p> <p>Details WL773 – 300 W x 450 H WL774 – 450 W x 575 H WL775 – 575 W x 575 H</p> <p>Material Mirror with nylon solid back Not scratch resistant</p> <p>Mounting Exposed screw fix (can be capped)</p> 
--	--	--

Fully compliant with Building Code Australia ASI428

BRAILLE SIGNAGE

Signage which also helps the visually impaired

WL16242 & WL16262

Male & Female Braille Signage

Details

WL16241-SS – Male black infill SS
 WL16241-V6 – Male white on blue vinyl
 WL16251-SS – Female black infill SS
 WL16251-V6 – Female white on blue vinyl

Size

150mm x 150mm



WL16210

Unisex Braille Signage

Details

WL16253-SS – Black infill SS
 WL16253-V6 – White on blue vinyl

Size

150mm x 150mm



WL16220

Unisex Accessible Braille Signage

Details

WL16254-SS – Black infill SS
 WL16254-V6 – White on blue vinyl

Size

210mm x 150mm



WL16270

Accessible Braille Signage

Details

WL16261-SS – Black infill SS
 WL16261-V6 – White on blue vinyl

Size

160mm x 150mm



WL16290

Shower Braille Signage

Details

WL16433-SS – Black infill SS
 WL16433-V6 – White on blue vinyl

Size

150mm x 150mm



WL16280

Baby Change Braille Signage

Details

WL16252-SS – Black infill SS
 WL16252-V6 – White on blue vinyl

Size

150mm x 150mm



NOTE: OTHER SIGNAGE AVAILABLE AS REQUIRED - P.O.A.

UTILITIES

A hook for every item

WL210

Utility hook s/s



WL211

Utility hook s/s



WL980

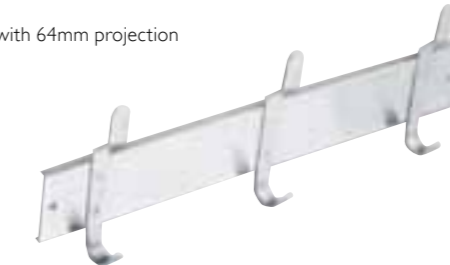
Utility hook strip s/s

Length (specify)

660mm – 3 hooks
 915mm – 4 hooks
 1170mm – 5 hooks

Size

232mm H with 64mm projection



WL212

Utility hook s/s



WL216

Utility hook s/s



WL981

Mop & broom rack s/s

Length (specify)

660mm – 3 holders
 914mm – 4 holders
 1168mm – 5 holders
 1422mm – 6 holders

Size

121mm H with 94mm projection



WL982

Utility shelf with mop holders & rag hooks s/s

Length (specify)

762mm – 3 mop holders/2 rag hooks
 914mm – 4 mop holders/3 rag hooks

Size

156mm H with 233mm projection



WL983

Mop holders & rag hooks s/s

Length (specify)

660mm – 3 mop holders/2 rag hooks
 914mm – 4 mop holders/2 rag hooks
 1168mm – 5 mop holders/2 rag hooks

Size

121mm H with 94mm projection



THE WATERLOO RANGE OF PRODUCTS

PEDESTAL MOUNTED

Waterloo Premier
Pedestal mounted, overhead braced with privacy strip



Waterloo Contemporary
Pedestal mounted, overhead braced



Waterloo Freedom
Offset pedestal mount to create a 'floating' look



SKIRT MOUNTED

Waterloo Liberty
Skirt mounted, freestanding



Waterloo Pinnacle
Skirt mounted, overhead braced



Waterloo Royal
Skirt mounted to ceiling



FLOOR MOUNTED

Waterloo Regent
Floor mounted, overhead braced



Waterloo Windsor
Floor mounted to ceiling



Suspended Systems

Waterloo Horizon
Beam suspended



BLADE MOUNTED

Waterloo Quintrex
Blade mounted, overhead braced



VANITIES

Waterloo vanities
Custom vanities designed for style & strength



LOCKERS

Waterloo lockers
Designed to suit all environments



SKIRT MOUNTED

Waterloo Kindy
Skirt mounted, reduced height



TABLES

Waterloo Tables
Sturdy & moisture resistant



SLAT SEATING

Waterloo Slat seating
Robust and reliable



SUSPENDED SYSTEMS

Waterloo Streamline
Ceiling suspended



AND MORE...



Visit the [waterloo website](http://www.waterloosystems.com.au) for even more products...

At Waterloo we make a large range of durable, hardwearing and impact resistant products that are functional and good looking.

For more information visit our website at www.waterloosystems.com.au





Leaders in wet area partitioning & locker systems



CTCI Pty Ltd 8 Watt Drive, PO Box 9076, Bathurst NSW 2795

Phone +61 02 6334 3222 **Fax** +61 02 6334 3225

Email waterloo@ctci.com.au

